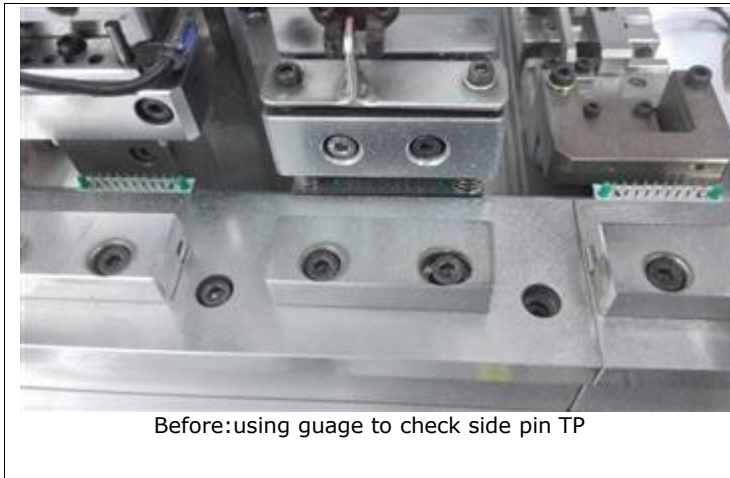


## Global Change Notification (GCN)

Product Family	Stack64 header Single BAY Product Series	10665869
		GCN Number
Series	34690&34691&34936 Series	January 09, 2015
		Date Issued
Reason For Change	Change In Test / Inspection Methods	
Change Description	<p>The purpose of this letter is to inform you that we will add CCD to check PCB side pin height and TP replacing by gauge previously. The reason is that we wish it could prevent high low pin and pin TP shift defect leaking out to customers. Part Number List Affected: 346900120 346900081 346900082 346900121 346900122 346900160 346900161 346900162 346900200 346900201 346900202 346900203 346910080 346909200 346909201 346909202 346910081 346910120 346910121 346910082 346910160 346910122 346910161 346910162 346910201 346910202 346910203 346910200 346916080 346916081 346916082 346916120 346916121 346916122 346916160 346916161 346916162 346916200 346916201 346916202 346916203 346919160 346919200 346919201 346919206 346919620 346919202 346919624 347072003 347072012 347072000 347072012 347072022 347072040 347072070 347073020 347074000 347073050 347073021 347073060 347082006 347082000 347082001 347074010 347082010 347082011 347082009 347082007 347082019 347082013 347082012 347082015 347082024 347082020 347082026 347082021 347082029 347082031 347082028 347082027 347082050 347082070 347082080 347083020 347083080 347083070 347083060 347083040 347083085 347083081 347083083 347083084 347083086 347083089 347083090 347083091 347083093 347083092 347083096 347083097 347084000 347084011 347084017 347084012 347084018 347084060 347084080 347084040 347085000 347087000 347086200 347084090 347087004 349972000 349976002 347089013 349972006 349972005 349973001 349973000 349977000 349977001 349974001 349974000 797255000 349977002 685324311 685324362 797255005 797255007 797255006 797255003 797255009 797255008</p>	



Part Numbers Affected	Please refer to CustomerPartList.csv attached to e-mail message.
Reason For Short Notice Exception	8D Corrective Action Changes
Assessment Of Change (How Product Will Be Qualified & Validated)	CCD GR&R Report
Internal Molex Qualification Date (Planned Date Information Available)	November 30, 2014
Sample Availability Date (Changed Part)	November 10, 2014

Date of Implementation	January 09, 2015
Method of Identifying Change	Laser mark second row date code greater than subscript number"35414—4/5/6"
Recommended Replacement Parts	
Last Time Buy Date for Obsolete Parts	
Last Time Ship Date for Obsolete Parts	

Contact	Name	E-mail	Phone Number
Sales Engineer	Please refer to e-mail message for your local sales engineer.		
Regional Coordinator (Japan and Korea)	Naomi Maruyama	Naomi.Maruyama@molex.co.jp	+81-46-265-2416
Regional Coordinator (Asia- excluding Japan and Korea)	Allen Yu	Allen.Yu@molex.com	+886-2-66251751
Regional Coordinator (Europe, Middle East, Africa)	Agnes Mburu	Agnes.Mburu@molex.com	+31-40-295-8271
Regional Coordinator (Americas)	Maria Sullivan	Maria.Sullivan@molex.com	1-727-322-4352

**Molex, Inc.**  
 2222 Wellington Court  
 Lisle, IL 60532  
 TEL: 630-969-4747  
[www.molex.com](http://www.molex.com)