



Product Change Notification (PCN)

PCN Number	510732	Date Issued	October 07, 2021
Reason for Change	Capacity change or tool replacement		
Change Type Description	This letter is to inform you that another set of tooling is being added to meet the current and future demands of this product. There will be no changes in the fit, form or function from the additional tooling when compared to the current tooling.		
Reason for Short Notice	New Capacity		
Assessment of Change	Passed FAI		
Internal Molex Qualification Date	November 10, 2021		
Sample Availability Date (Changed Part)	November 10, 2021		
Planned Implementation Date	November 12, 2021		
Method of Identifying Change	Product made after planned implementation date can contain the change		

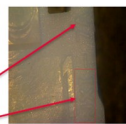
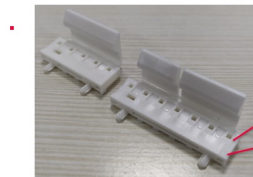
RELEASED

Before Change

KK 156 Header - BEFORE

Mold:

- For 42492 series headers cavity # visible is #1A to # 8A



Cavity # 1A to 8A

Factory code JXI

Assembly:

- 41791 , 42491 , 42891 , 171813 , 41792 , 42492 , 42892 Series parts are produced from the existing 4 assembly machines

After Change

KK 156 Header - AFTER

- On increased demand in KK 156 Header, new capacity mold and assembly machine is getting added.
 - Wafers will be supplied from any of 1 existing mold or 1 new mold after the implementation date.
 - Headers will be supplied from any of 4 existing machines or 1 new machine after the implementation date
- Product Impact
 - No Impact on Fit, Form or Function.
 - In Mold cavity #1A to #16A will be visible.
- Part Number Impact
 - Refer the attached list.
- Qualification Reports and samples. available upon request after the date shown above





Product Change Notification (PCN)

You may address any technical inquiries regarding this PCN by sending E-mail to pcn_coordinator@molex.com or your Local Sales Engineer.

Note: While responding, please retain "**PCN Notification:510732**" in the e-mail Subject line for faster response.

RELEASED

Molex, LLC
2222 Wellington Court
Lisle, IL 60532
TEL: 630-969-4747
www.molex.com

PCN #	Molex Part #
510732	26604020
510732	26604030
510732	26604040
510732	26604050
510732	26604060
510732	26604063
510732	26604070
510732	26604080
510732	26604083
510732	26604090
510732	26604100
510732	26604103
510732	26604110
510732	26604120
510732	26604140
510732	26604180
510732	26605020
510732	26605030
510732	26605040
510732	26605050
510732	26605060
510732	26605080
510732	26605140
510732	26605160
510732	26606060
510732	26606070
510732	26614020
510732	26614030
510732	26614040
510732	26614050
510732	26614060
510732	26614070
510732	26614100
510732	26614130
510732	26615030
510732	26615040
510732	26615060
510732	26624030
510732	26624050
510732	26624074
510732	26644020
510732	26644030
510732	26644040
510732	26644060
510732	26644080
510732	26644110

510732	26645020
510732	27624052
510732	27624087
510732	417920342
510732	424920277
510732	1718130006
510732	1718141002
510732	1718143010
510732	26645040
510732	26654040
510732	424910316
510732	1718133006
510732	417911075
510732	417910837