



# Product Change Notification

<b>Date Issued :</b>	March 14, 2024	<b>PCN Number :</b>	514990
<b>Reason for Change :</b>	Capacity change or tool replacement		
<b>Description of Change :</b>	This notification is to inform you that Molex Lincoln Nebraska is replacing tooling that will impact the products referenced in the attached list. There will be no changes in fit, form or function of product when compared to the existing tooling.		
<b>Assessment of Change :</b>	First Article Inspection SPC / Capability Studies		
<b>Planned Implementation Date :</b>	October 01, 2024		
<b>Customer Sample Availability Date:</b>	July 19, 2024		
<b>Last date to request Samples by Customer :</b>	May 22, 2024		
Please note if Samples are not requested as per Customer Samples Request date, it may take additional 4-6 weeks to arrange Samples.			
<b>Traceability Code Markings / Date :</b>	Product made after planned implementation date can contain the change		

Before Picture

## MINIFIT JR Vertical BMI Housings

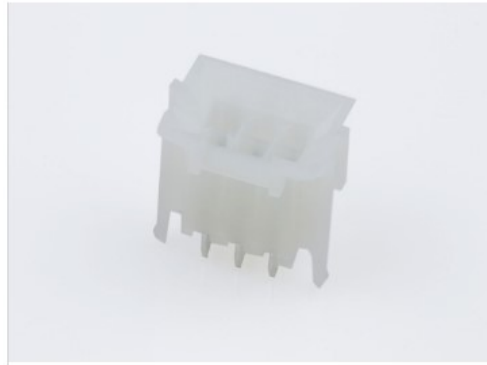


Photo is used as representation of product only.

After Picture

## Overview

- To ensure continuous product quality and delivery, Molex Lincoln, Nebraska is proactively replacing tooling that produces the Mini-Fit Jr Vertical Header Housings.
  - Tooling being replaced to keep up with current and future demand
- There is NO impact to Fit, Form or Function
- Part Numbers Impacted
  - See attached list
- Samples and Qualification Reports available upon request after date shown above.
- Questions/concerns contact your Molex Account Manager

# RELEASED

PCN No	Part List
514990	15246061
514990	15246062
514990	15286061
514990	15286062
514990	444740611
514990	460110602
514990	460110603

You may address inquires regarding this PCN by clicking on the below link  
[mailto:pcn\\_coordinator@molex.com?subject=PCN\\_Notification:514990](mailto:pcn_coordinator@molex.com?subject=PCN_Notification:514990)  
 or contact your Local Sales Engineer.

Note: While responding, please retain " PCN Notification : **PCN Notification: 514990** " in the e-mail Subject line for faster response.

[Molex, LLC](#)  
 2222 Wellington Court  
 Lisle, IL 60532  
 TEL (800) 786-6539  
[www.molex.com](http://www.molex.com)