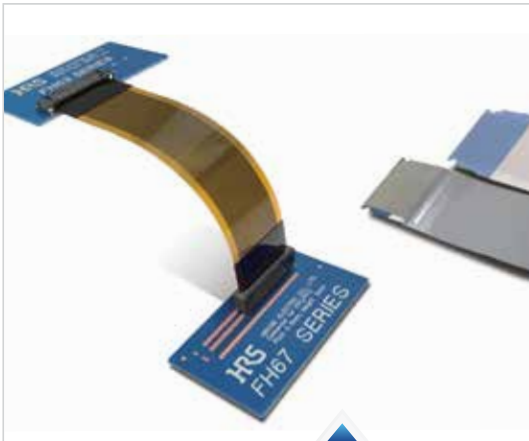


## FH67 Series

0.5mm Pitch, 3.57mm depth One Action Lock, Vertical Connection FPC/FFC/Shield FFC connector

### FEATURES:

- ▶ One action lock suitable for robotic assembly
- ▶ High reliability with two-point independent spring contact design. Wiping action reduces contact failure due to dust intrusion.
- ▶ 125°C heat resistance connector to satisfy severe automotive requirements
- ▶ Excellent FPC/FFC insertion operability & high retention force
- ▶ Shielded FFC prevents EMI

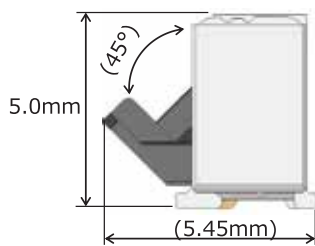


**FH67 INTEGRATES VARIOUS TECHNOLOGY ADVANCEMENTS**

[Lock Lever Closed]

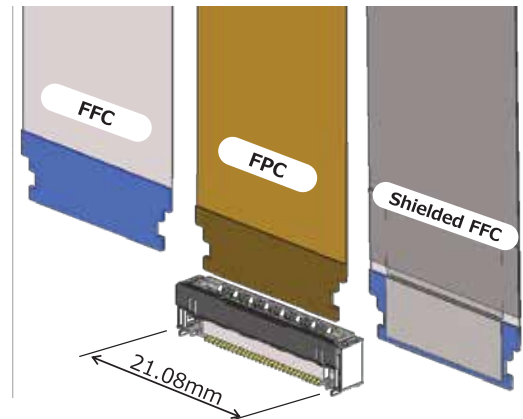


[Lock Lever Opened]



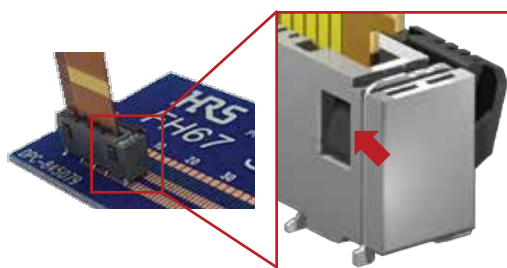
### Dimension Example (30pos.)

- ▶ 0.5mm Pitch
- ▶ FPC/FFC Thickness =  $0.33 \pm 0.03\text{mm}$   
 ( $0.30 \pm 0.05\text{mm}$  is planned for development)

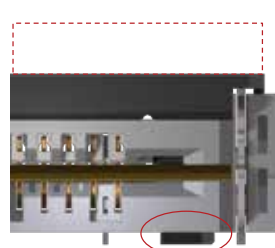


### Confirmation of FPC/FFC Insertion

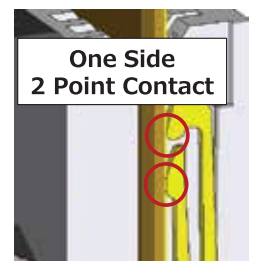
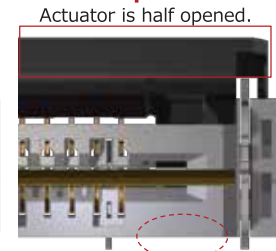
In incomplete insertion state, the actuator is half opened. Additionally the projections for confirming completed insertion state in the housing cannot be seen.



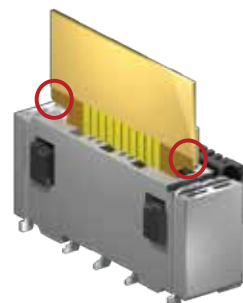
✓: Normal Insertion



✗: Incomplete Insertion



Insertion Status  
 Checking with FPC/FFC



**Accepts FPC/FFC/  
 Shielded FFC**

Insertion is completed when FPC/FFC is pushed to this line.

# Applications



Game Console



FA Camera



Medical Device



Multifunction Printer



Automotive

- Car Navigation
- Laser Radar
- mm Wave Radar
- Meter
- Drive Recorder
- Display Audio
- In-Vehicle Camera



Servo Amplifier



Industrial Control System



AI Speaker

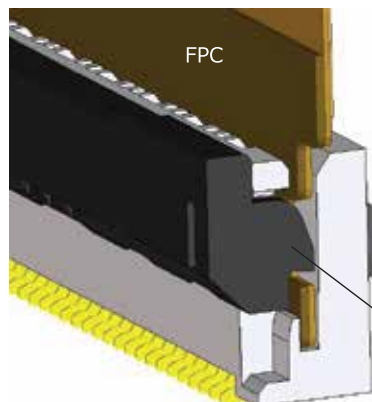
## FH67 Competitive Advantages

### High FPC/FFC Retention Force

Secure Mating due to High Retention Force

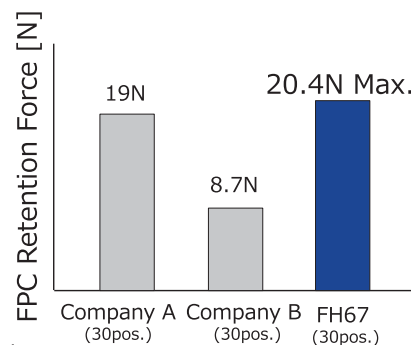
Robust raised portion of lock lever firmly catches FPC/FFC tab

Cross-Section View of Lock



Raised Portion

One Action Lock for easy insertion and high retention force



\*Numerical value is standard.



For additional information please go to [www.hirose.com/product/series/FH67](http://www.hirose.com/product/series/FH67)

Specifications herein are subject to change without notice. Contact Hirose for latest specifications, drawings, or availabilities.

STAY CONNECTED

