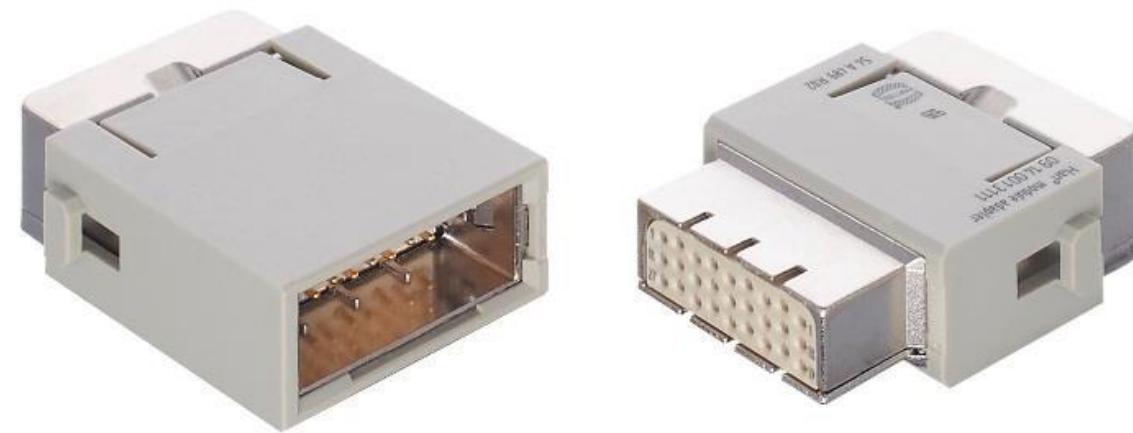


Han-Modular[®] 27 Shielded Module



Pushing Performance



Description Links to Other Materials

High density product extension of the shielded module. Suitable for transmission of sensitive signals (ie bus signals). Shielding bus is separate from housing potential

- [Modular 27 Shielded Module](#)

Specs

- Number of Contacts: 27
- Termination method: Crimp
- Shielding included
- Temp Range: -40C to +85C
- Rated Current: 2A
- Rated Voltage: 16V

Markets

- PGTD
- Machinery
- Robotics
- Wind Energy

Applications

- Semiconductor machines for signal transmission
 - Initial target customer: ASML
 - Modular substitute for 25 pin D-sub connector

Feature	Advantage	Benefit
■ 360° shielding	■ Secures signal integrity throughout the point of connection	■ Reliable signals sent to control center for adequate readings
■ High Density	■ Miniaturization	■ Cost and space efficiency
■ Gold plated M12 contacts	■ Readily available	■ Lower price breaks